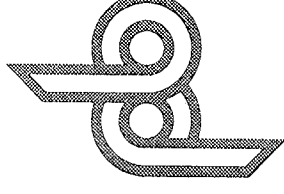


## **PBF072 45 DEGREE HYPEREXTENSION ASSEMBLY INSTRUCTIONS**

11. To secure the TELESCOPE ASSEMBLY in place, use one (1) THUMB SCREW. (SEE DETAIL A)
12. Slide two (2) 4 X 7 IN. ROLLER PADS onto each end of the ROLLER PAD SHAFT on the TELESCOPE ASSEMBLY, and hold in place using two (2) STAR LOCK COLLARS. (SEE DRAWING)
13. Slide two (2) 4 X 7 IN. ROLLER PADS over each end of the HANDLE on the TELESCOPE ASSEMBLY. (COAT THE INSIDE OF THE ROLLER PAD WITH WATER, THEN PROCEED TO SLIDE THE ROLLER PADS ONTO HANDLE. (ROTATING THE PAD WHILE PUSHING WILL EASE THE ASSEMBLY)
14. Slide two (2) 1-1/4 X 5 IN. GRIPS over each end of the HANDLE on the TELESCOPE ASSEMBLY.

**PARABODY INC.**



## **45 DEGREE HYPEREXTENSION PBF072**

### **PRODUCT ASSEMBLY INSTRUCTION SHEETS**

#### **TOOLS REQUIRED FOR ASSEMBLY**

- 9/16 INCH WRENCH or SOCKET
- ADJUSTABLE WRENCH
- RUBBER MALLET or HAMMER

**REVISION: B**

If you experience any problem with the assembly of this product, please contact your dealer or your PARABODY Customer Service Representative at:

**1-800-328-9714**

**PBF072 45 DEGREE HYPEREXTENSION ASSEMBLY PARTS LIST**

**SORT AND COUNT ALL PARTS BEFORE BEGINNING ASSEMBLY**

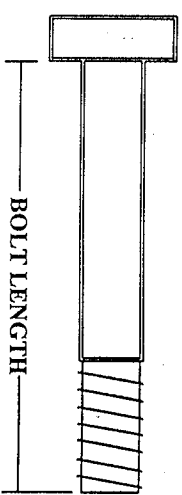
**HARDWARE:**

ITEM	NAME/DESCRIPTION	QTY
1.	3/8 X 3-1/4 IN. BOLT	2
2.	3/8 IN. WASHER	4
3.	3/8 IN. LOCK WASHER	2
4.	3/8 IN. NUT	2
5.	STAR LOCK COLLAR	4
6.	THUMBSCREW	1
7.	PLUNGER	1
8.	SPACER	1
9.	SPRING	1
10.	COTTER PIN	1
11.	KNOB	1
12.	2-1/2 IN. DIA. ROUND END CAP	2
13.	2 IN. SQ. END CAP	3
14.	1-3/4 IN. SQ. END CAP	1
15.	1-1/2 IN. SQ. END CAP	2
16.	1-1/4 X 5 IN. GRIP	2
17.	2-1/2 X 5-1/2 IN NON SKID STRIP	2
18.	PARAGLIDE STRIP	1

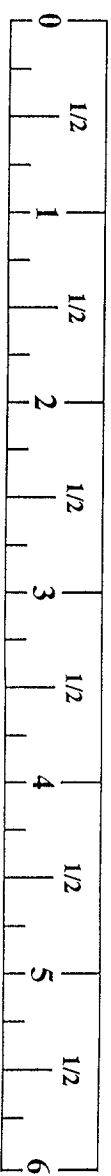
**WELDMENT/PARTS:**

ITEM	NAME/DESCRIPTION	QTY
1.	BASE ASSEMBLY	1
2.	TELESCOPE ASSEMBLY	1
3.	BRACE ASSEMBLY	1
4.	ROLLER PAD SHAFT	1
5.	4 X 7 IN. ROLLER PAD	6

**NOTE: BOLT LENGTH IS MEASURED FROM THE UNDERSIDE OF THE HEAD OF THE BOLT.**



**BOLT LENGTH RULER:**

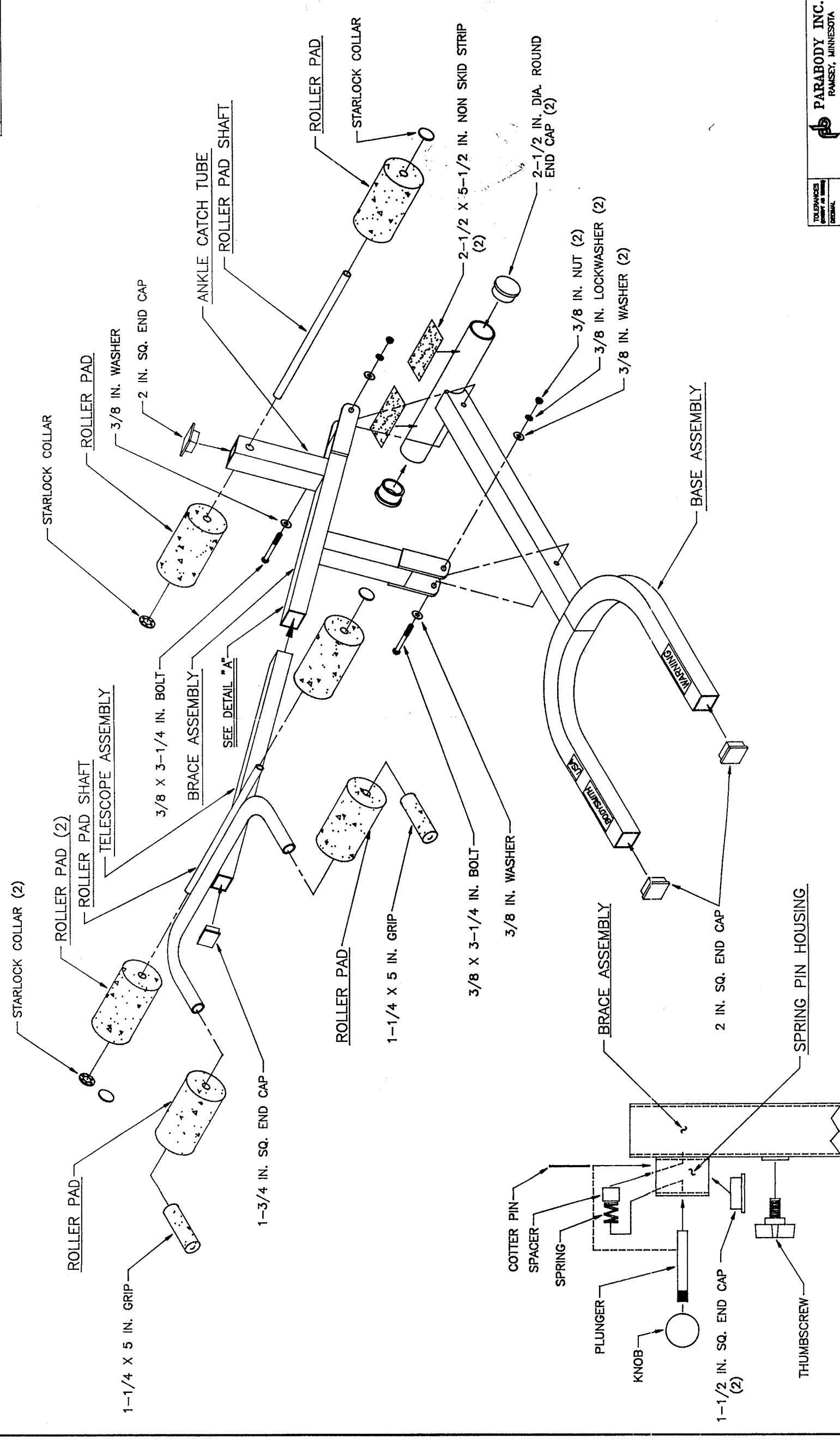


**PBF072 45 DEGREE HYPEREXTENSION ASSEMBLY INSTRUCTIONS**

**IMPORTANT:**

- **THE BODYSMITH 45 DEGREE HYPEREXTENSION SHOULD BE ASSEMBLED ON A FLAT LEVEL SURFACE TO ASSURE ITS PROPER FUNCTION.**

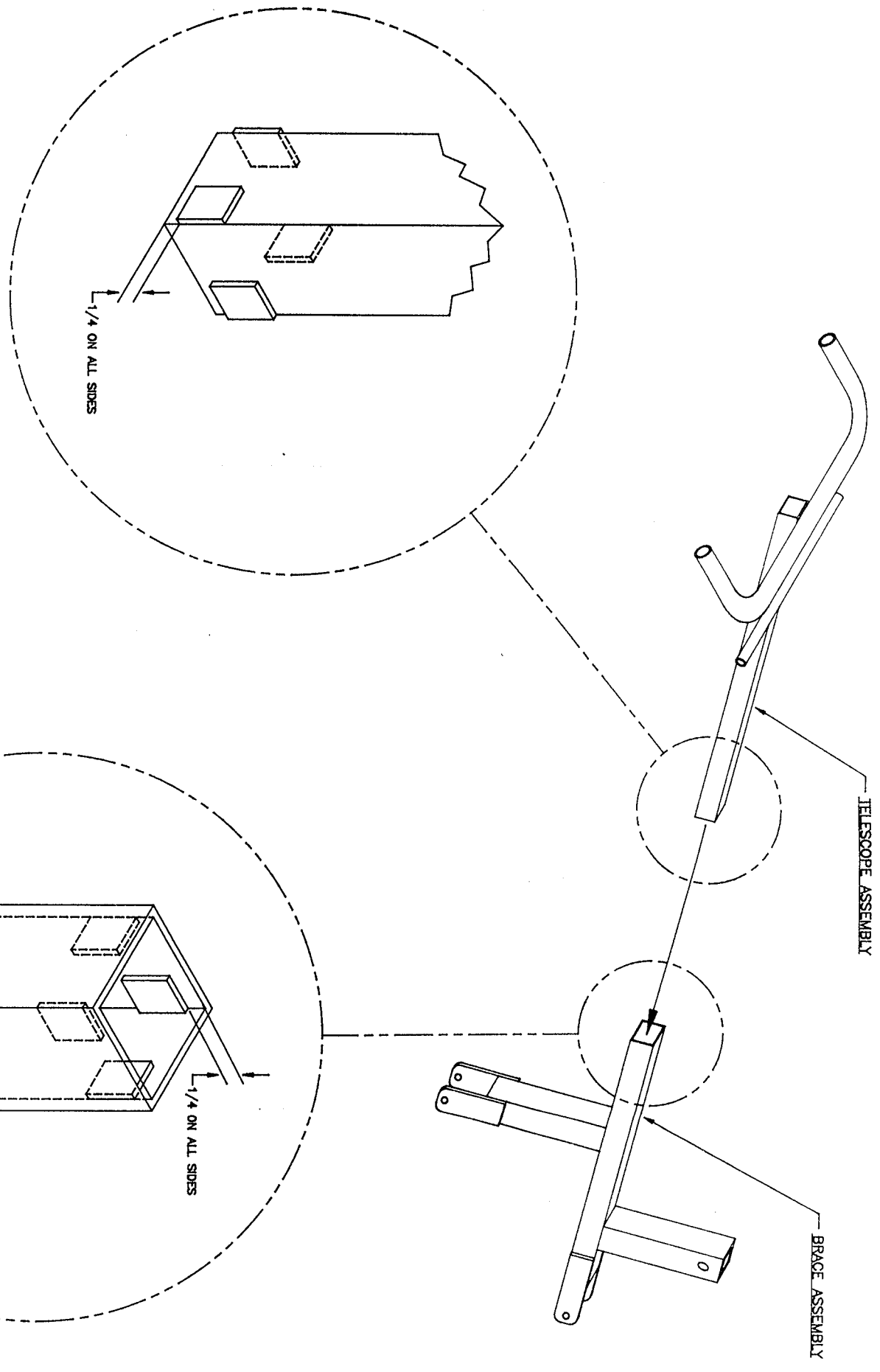
1. Attach two (2) 2-1/2 X 5-1/2 IN. NON SKID STRIPS to the **ROUND TUBE** on the **BASE ASSEMBLY** as shown on drawing.
2. Insert two (2) 2-1/2 IN. DIA. ROUND END CAPS into the ends of the **ROUND TUBE** of the **BASE ASSEMBLY**. Also insert two (2) 2 IN. SQ. END CAPS into the front end of the **BASE ASSEMBLY**. (SEE DRAWING)
3. Insert one (1) 2 IN. SQ. END CAP into the end of the **ANKLE CATCH TUBE** of the **BRACE ASSEMBLY**. (SEE DRAWING)
4. **SECURELY** assemble the **BRACE ASSEMBLY** to the **BASE ASSEMBLY** as shown on drawing, using two (2) 3/8 X 3-1/4 IN. BOLTS, four (4) 3/8 IN. WASHERS, two (2) 3/8 IN. LOCK WASHERS, and two (2) 3/8 IN. NUTS.
5. Assemble two (2) 4 X 7 IN. ROLLER PADS, and one (1) ROLLER PAD SHAFT to the **ANKLE CATCH TUBE** of the **BRACE ASSEMBLY**, using two (2) STAR LOCK COLLARS. (SEE DRAWING)
6. Assemble the **SPRING PIN ASSEMBLY** to the **SPRING PIN HOUSING** on the **BRACE ASSEMBLY**, using one (1) **KNOB**, one (1) **PLUNGER**, one (1) **SPRING**, one (1) **SPACER**, and one (1) **COTTER PIN**, using the following steps:
  - A. Assemble the **KNOB** to the **PLUNGER**.
  - B. Insert the **PLUNGER** through the first hole of the **HOUSING**.
  - C. Slip the **SPRING** and the **SPACER** over the end of the **PLUNGER**. (IN THAT ORDER)
  - D. Insert the **PLUNGER** through the second hole of the **HOUSING**.
  - E. Pull back the **SPACER** on the **PLUNGER** and insert the **COTTER PIN** through the hole.
  - F. SEE DETAIL A ON DRAWING.
7. Insert two (2) 1-1/2 IN. SQ. END CAPS into both ends of the **SPRING PIN HOUSING** on the **BRACE ASSEMBLY**.
8. Insert one (1) 1-3/4 IN. SQ. END CAP into the end of the **TELESCOPE ASSEMBLY**. (ON THE END WITH THE HANDLE)
9. Attach four (4) **PARAGLIDE STRIPS** to the end of the **TELESCOPE ASSEMBLY**, and four (4) **PARAGLIDE STRIPS** to the inside of the **BRACE ASSEMBLY END** as shown on drawing (2 OF 2), using the following steps:
  - Thoroughly clean all surfaces where the paraglide strips are to be attached.
  - Remove the paper backing from the paraglide strips and firmly apply them to all shown surfaces (8 places).
10. Pull back the **SPRING PIN** on the **BRACE ASSEMBLY** and insert the **TELESCOPE ASSEMBLY**, and slide it down to the desired setting.



DETAIL "A"

DATE: 10/1/00 DESCRIPTION: PBF072

REVISIONS  
REV: 1 DESCRIPTION: PBF072 DATE: 10/1/00  
A



TOLERANCES UNLESS OTHERWISE SPECIFIED	PARABODY INC. RAMSEY, MINNESOTA
FINISHES UNLESS OTHERWISE SPECIFIED	ERICKSON/NEWARK
DATE: 1/5/00	ASSEMBLY INSTRUCTION
REV: 2/21/01	PBF072